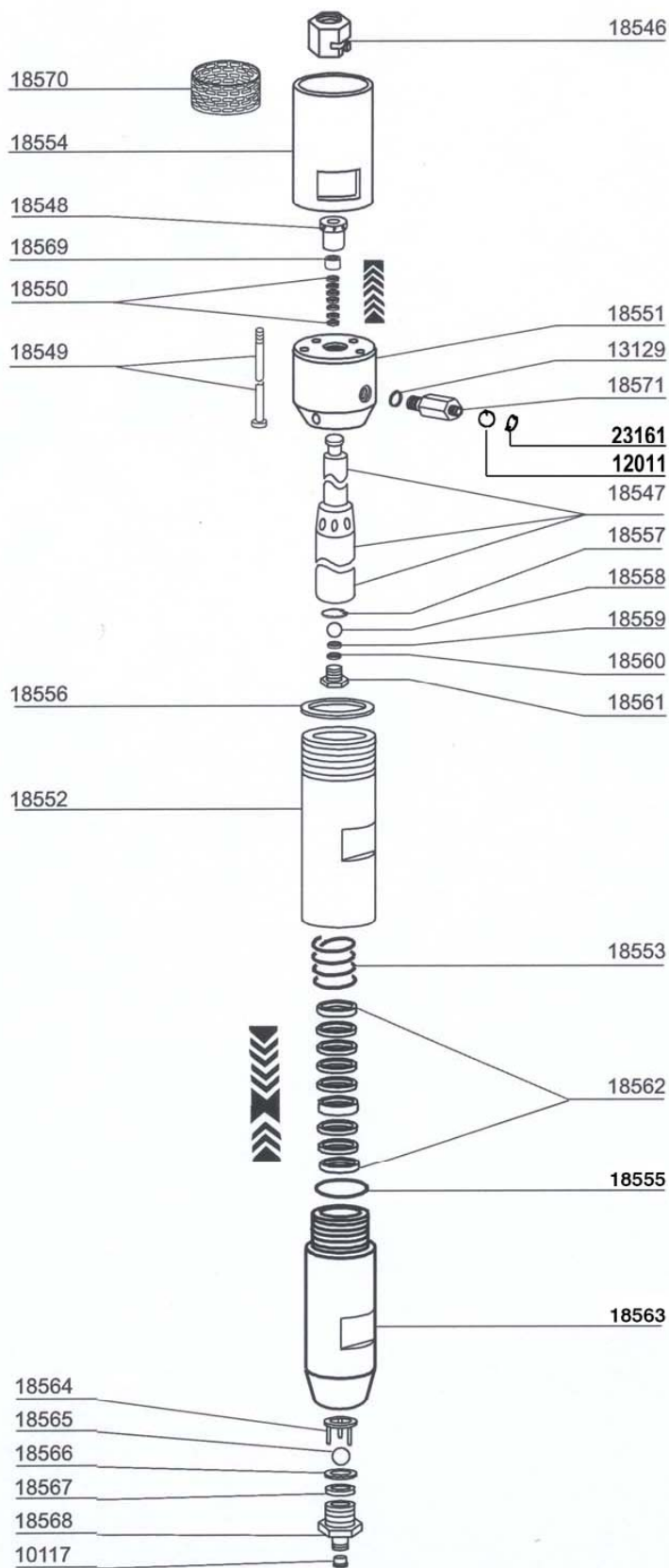
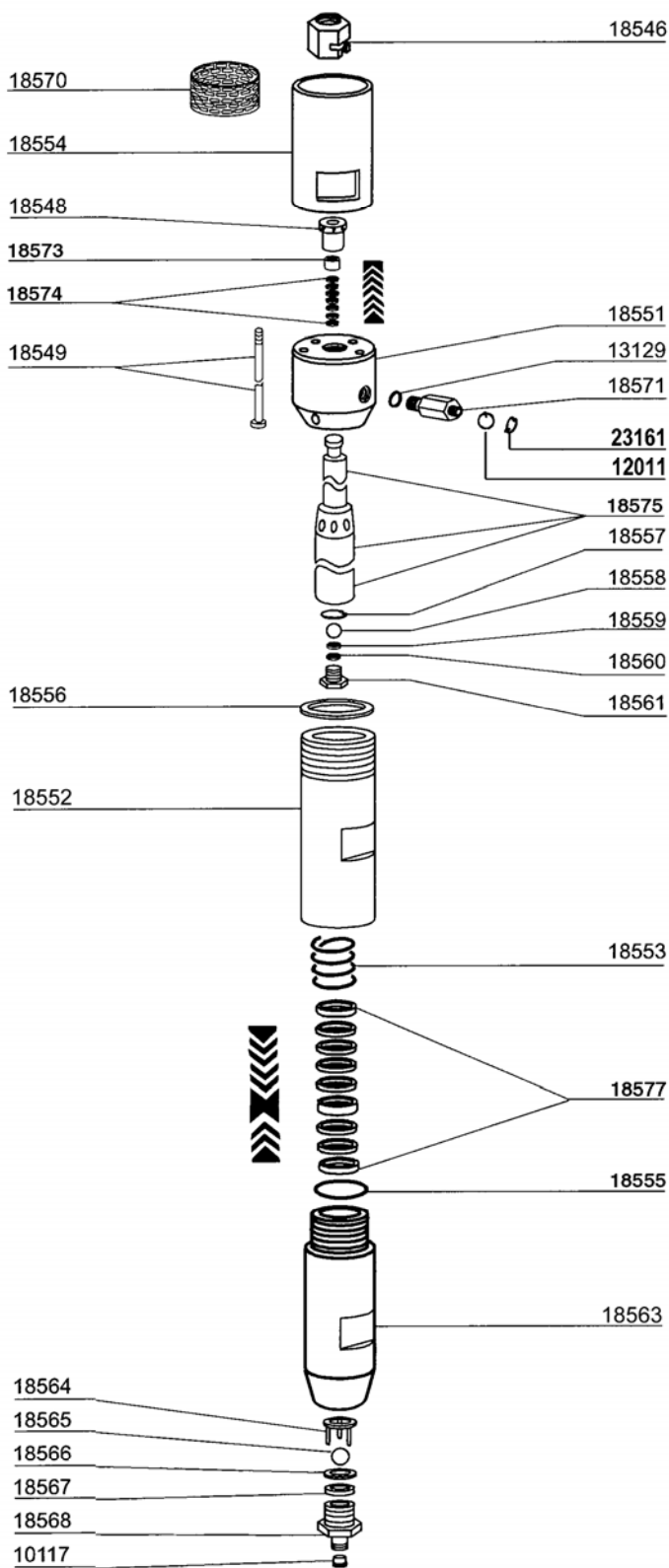


PART LIST and DIAGRAM
Pneumatic Airless Pump 18000 P - (48:1) - paint part



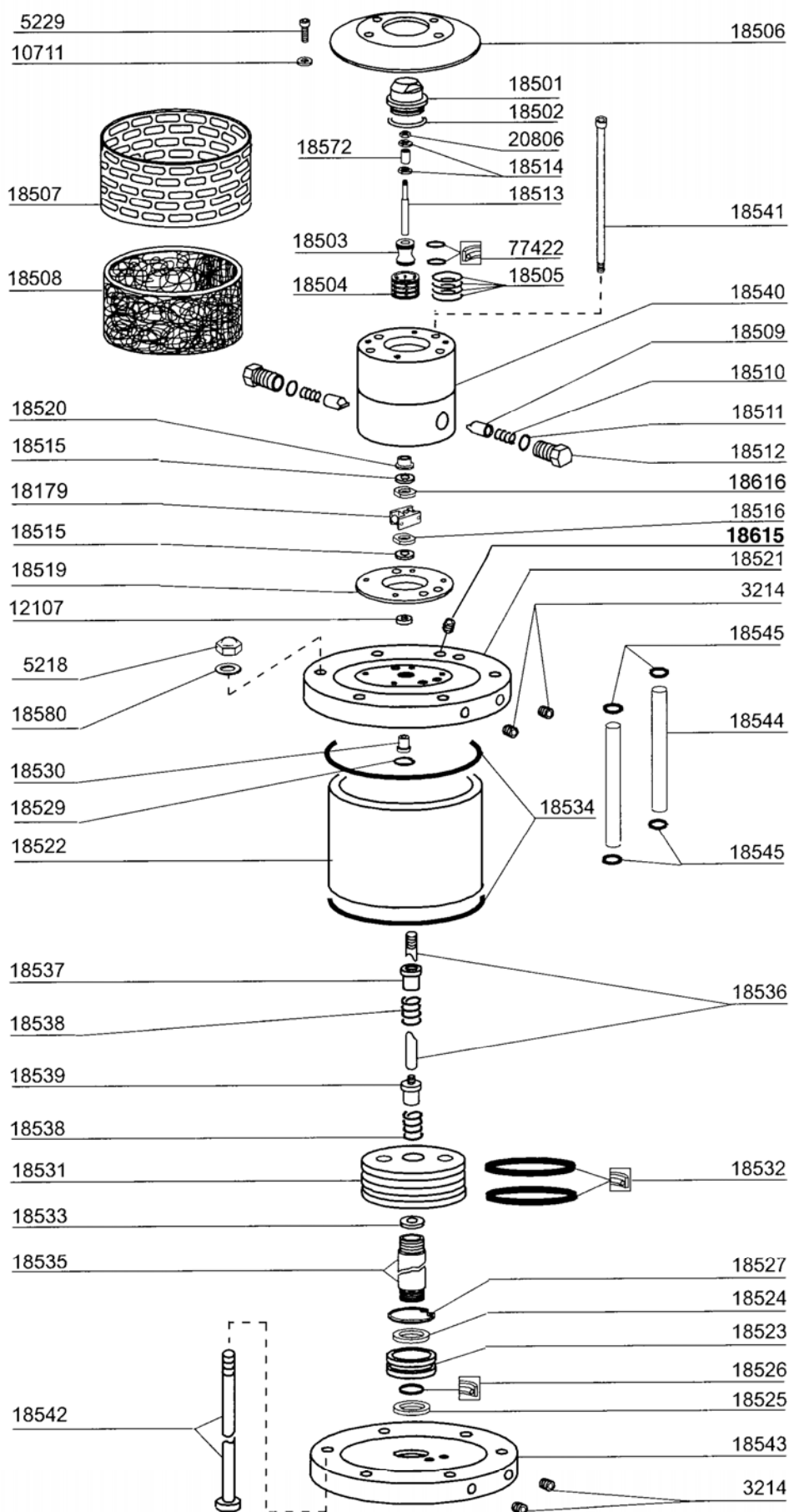
Ref.	Description	Q.ty
18500	Pneumatic airless pump 18000 P (48:1)	
010117	INLET SEAL	1
012011	BALL dia.11, S.S.	1
013129	COPPER GASKET 1/2"	1
018546	JOINT	1
018547	PISTON 48:1	1
018548	PRESSURE WASHER	1
018549	TIE-ROD	4
018550*	UPPER PACKING	1
018551	CENTRAL BODY	1
018552	INTERMEDIATE BODY	1
018553	SPRING	1
018554	SPACER	1
018555	O-RING TEFLON, LOWER	1
018556	O-RING TEFLON, UPPER	1
018557	BALL-STOP	1
018558	BALL Ø 18	1
018559	WASHER	1
018560	SEAT CARBIDE	1
018561	SEAT-PRESS CARDIBE	1
018562*	LOWER PACKING	1
018563	LOWER BODY	1
018564	BALL-STOP	1
018565	BALL Ø 30	1
018566	WASHER	1
018567	SEAT CARBIDE	1
018568	SUCTION BODY	1
018569	BUSH, NUT	1
018570	PROTECTION SCREEN	1
018571	WASHER	1
023161	BALL STOP RING	1
Spare parts suggested:		
18528	UPPER AND LOWER PACKING SET - 48:1 (*)	
18558	BALL, COMPRESSION VALVE	
18560	BALL SEAT, COMPRESSION VALVE	
18565	BALL, SUCTION VALVE	
18567	BALL SEAT, SUCTION VALVE	

PART LIST and DIAGRAM
Pneumatic Airless Pump 18000 P - (66:1) - paint part



Ref.	Description	Q.ty
18000	Pneumatic airless pump 18000 P (66:1)	
010117	INLET SEAL	1
012011	BALL dia.11, S.S.	1
013129	COPPER GASKET 1/2"	1
018546	JOINT	1
018548	PRESSURE WASHER	1
018549	TIE-ROD	4
018551	CENTRAL BODY	1
018552	INTERMEDIATE BODY	1
018553	SPRING	1
018554	SPACER	1
018555	O-RING TEFLON, LOWER	1
018556	O-RING TEFLON, UPPER	1
018557	BALL-STOP	1
018558	BALL dia. 18	1
018559	WASHER	1
018560	SEAT CARBIDE	1
018561	SEAT-PRESS CARBIDE	1
018563	LOWER BODY	1
018564	BALL-STOP	1
018565	BALL dia. 30 IN S.S.	1
018566	WASHER	1
018567	SEAT CARBIDE	1
018568	SUCTION BODY	1
018570	PROTECTION SCREEN	1
018571	NON-BACKFLOW VALVE NIPPLE	1
018573	SELF-LUBRICATING BUSH 18000 P	1
018574*	UPPER PACKING 66:1	1
018575	PISTON 66:1	1
018577*	LOWER PACKING 66:1	1
023161	BALL STOP RING	1
Spare parts suggested:		
18518	UPPER AND LOWER PACKING SET - 66:1 (*)	
18558	BALL, COMPRESSION VALVE	
18560	BALL SEAT, COMPRESSION VALVE	
18565	BALL, SUCTION VALVE	
18567	BALL SEAT, SUCTION VALVE	

PART LIST and DIAGRAM
Pneumatic Airless Pump 18000 P - air motor



Technical data subject to change

PART LIST and DIAGRAM
Pneumatic Airless Pump 18000 P - air motor

Ref.	Description	Q.ty	Ref.	Description	Q.ty
003214	PLUG	4			
005218	FIXING NUT, MOTOR	6	018525	O-RING, BUSH	1
005229	FIXING BOLT	4	018526	LUBRORING, BUSH	1
010711	WASHER	4	018527	STOP-SEEGER	1
012107	SEAL RING	1	018529	SEEGER	1
018179	REVERSAL CONTROL SYSTEM	1	018530	BUSH	1
018501	CAP	1	018531	AIR PISTON	1
018503	FUSE	1	018532	SEAL GASKET	2
018504	SEAL, FUSE	1	018533	WASHER	1
018505	OR, SEAL	4	018534	O-RING	2
018506	COVER	1	018535	SHAFT	1
018507	FILTER NET	1	018536	SMALL SHAFT	1
018508	CARTRIDGE	1	018537	BUSH FOR SPRING	1
018509	TRACER POINT	2	018538	INVERSION SPRING	2
018510	SPRING	2	018539	FINAL SPRINDLE	1
018511	OR, TRACER POINT BODY	2	018540	DISTRIBUTOR BODY	1
018512	BODY, TRACER POINT	2	018541	TIE-ROD FOR DISTRIBUTOR	4
018513	PILOT SPINDLE	1	018542	TIE-ROD	6
018514	UPPER WASHER	2	018543	LOWER FLANGE	1
018515	SPACER CAUCCIU'	2	018544	AIR HOSE	2
018516	WASHER	2	018545	OR, AIR HOSE	4
018519	GASKET	1	018572	SPACER, REVERSAL	1
018520	BUSH	1	018580	WASHER	6
018521	UPPER FLANGE	1	018615	PNEUMATIC SAFETY VALVE	1
018522	AIR CYLINDER	1	018616	UPPER WASHER	2
018523	BUSH	1	020806	BOLT	1
018524	SEAL GASKET	1	077422	LUBRORING	2