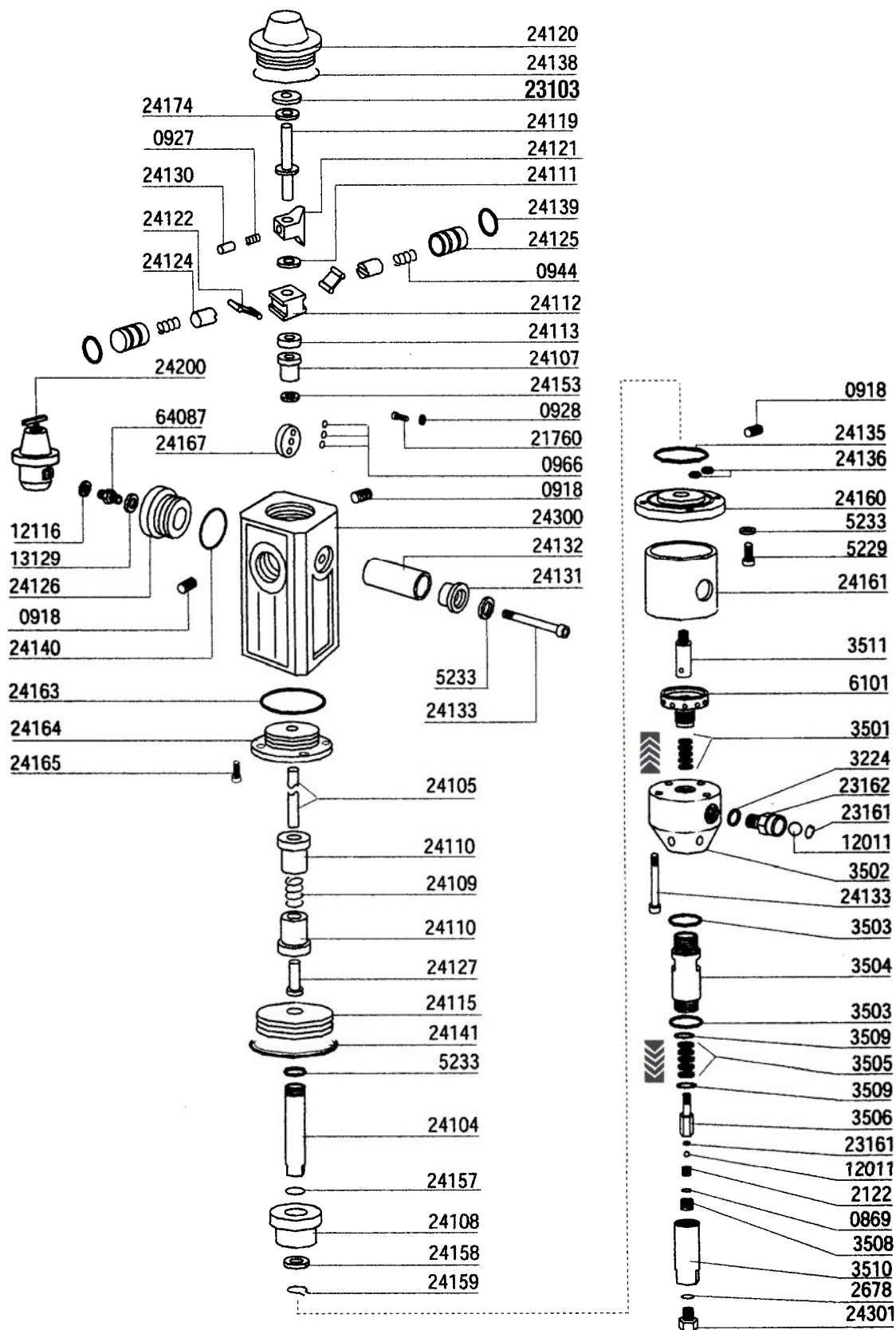


PART LIST and DIAGRAM
Pneumatic Airless Pump 3200 P - (26:1)



PART LIST and DIAGRAM
Pneumatic Airless Pump 3200 P - (26:1)

Ref.	Description	Q.ty	Ref.	Description	Q.ty
27002	<i>Pneumatic airless pump 3200 P</i>				
000869**	NYLON SEAL	1	024126	AIR CLUTCH FLANGE	1
000918	SCREW	2	024127	BOLT	1
000927	SPRING, SUCTION VALVE	1	024130	SPRING GUIDE	1
000928	WASHER, SUCTION VALVE	2	024131	SILENCER FIXING CAP	1
000944	SPRING	2	024132	SILENCER CYLINDER	1
000966	RING IN TEFLON	3	024133	BOLT	4
002122**	SEAT	1	024135	O.R.	1
002678*	GASKET, SUCTION VALVE	1	024136	O.R.	2
003224	COPPER GASKET	1	024138	O.R.	1
003501***	UPPER PACKING SET	1	024139	O.R.	2
003502	PUMP HSG. ASSY, S.S.	1	024140	O.R.	1
003503	O-RING, TEFLON	2	024141	LUBRRORING	1
003504	SLEEVE	1	024153	LUBRRORING	1
003505***	DYNAMIC PACKINGS	1	024157	O.R.	1
003506**	COMPERSION VALVE BODY	1	024158	O.R.	1
003508**	COMPRESSION VALVE NUT	1	024159	SEEGER RING	1
003509	DYNAMIC PACKINGS WASHER	2	024160	AIR MOTOR FLANGE	1
003510	LOWER PUMP HSG. ASSY	1	024161	SPACER	2
003511	PISTON ROD	1	024163	O.R.	1
005229	FIXING BOLT	6	024164	DIAPHRAGM	1
005233	WASHER SCHNOOR	8	024165	SCREW, DIAPHRAGM	4
006101	PRESSURE NUT	1	024167	CAP	1
012011**	BALL dia.11, S.S.	1	024174	WASHER	1
012116	COPPER GASKET	1	024200	PRES. REDUCER 3/8" CPL. WITH GAUGE	1
013129	COPPER GASKET 1/2"	1	024300	AIR MOTOR BODY	1
021760	FIXING SCREW	2	024301*	BALL VALVE COMPLETE	1
023103	UPPER BUFFER	1	064087	NIPPLE M3/8" - M1/2" - S.S.	1
023161**	BALL STOP RING	1			
023162	NON-BACKFLOW VALVE NIPPLE	1			
024104	SHAFT 2900 P	1			
024105	PILOT VALVE ROD	1			
024107	SELF-LUBRICATING BUSH	1			
024108	LOWER BUSH	1			
024109	SPRING	1			
024110	UPPER GUIDE	2			
024111	SPACER WASHER	1			
024112	PILOT VALVE BLOCK	1			
024113	LOWER BUFFER	1			
024115	AIR MOTOR PISTON	1			
024119	PILOT SHAFT	1			
024120	COVER COMPLETE WITH BUSH	1			
024121	AIR CONTROL VALVE SUPPORT	1			
024122	KEEPER	2			
024124	PILOT VALVE PISTON	2			
024125	PISTON BODY	2			

Spare parts suggested:

10328	DUMP VALVE KIT,S.S.	
24308	SUCTION VALVE KIT (*)	
27318	COMPRESSION VALVE KIT (**)	
27803	UPPER AND LOWER PACKINGS SET (***)	