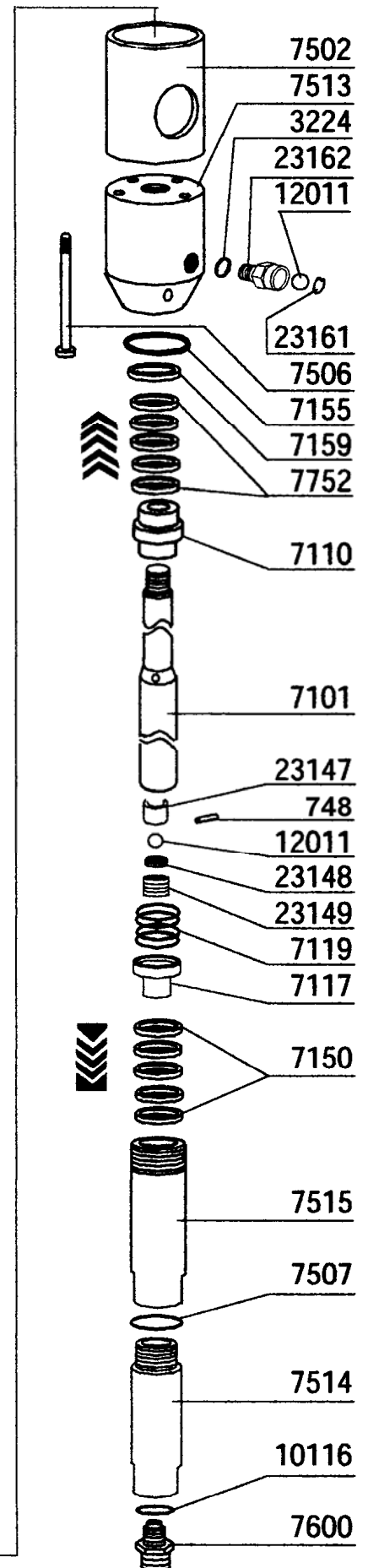
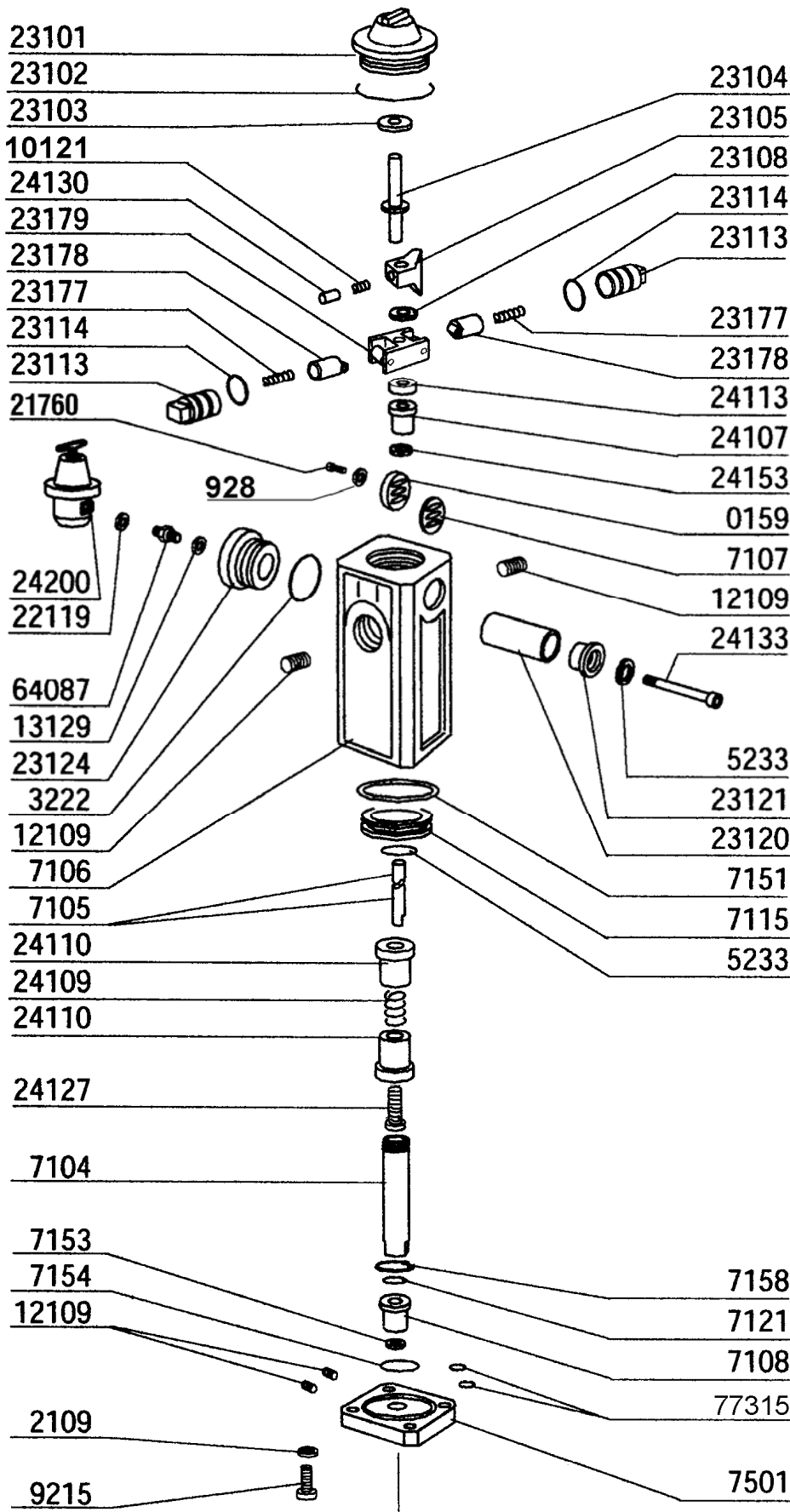


PART LIST and DIAGRAM
Pneumatic Airless Pump 7000 P - (30:1)



PART LIST and DIAGRAM
Pneumatic Airless Pump 7000 P - (30:1)

Ref.	Description	Q.ty	Ref.	Description	Q.ty
7002	Pneumatic airless pump 7000 P				
000159	CAP	1	023147	BALL CONTROL BUSH	1
000748	BALL-STOP PIN	1	023148***	COPPER GASKET	1
002109	SCHNOOR WASHER	4	023149***	BALL SEAT COMPLETE	1
003222	O.R.	1	023161	BALL STOP RING	1
003224	COPPER GASKET	1	023162	NON-BACKFLOW VALVE NIPPLE	1
005233	WASHER SCHNOOR	2	023177	SPRING FOR REVERSAL KIT	2
006121	SPRING	1	023178	REVERSAL KIT PISTON	2
007101	MATERIAL PISTON	1	023179	REVERSAL CONTROL SYSTEM	1
007105	ROD	1	024107	SELF-LUBRICATING BUSH	1
007106	AIR CONTROL VALVE BODY	1	024109	SPRING	1
007107	GASKET	1	024110	UPPER GUIDE	2
007108	BUSH IN TEFLON	1	024113	LOWER BUFFER	1
007110	PRESSURE WASHER	1	024127	BOLT	1
007115	AIR MOTOR PISTON	1	024130	SPRING GUIDE	1
007117	PACKINGS PRESS	1	024133	BOLT	1
007119	SPRING	1	024153	LUBRORING	1
007121	RING C.S.C.	1	024200	PRES. REDUCER 3/8" CPL. WITH GAUGE	1
007150**	LOWER SEAL	1	064087	NIPPLE M3/8" - M1/2" - S.S.	1
007151	LUBRORING	1	077315	OR RING	2
007153	O.R. RING	1			
007154	O.R. RING	1			
007155	O.R. RING, TEFLON	1			
007158	SEEGER RING	1			
007159	OIL SEAL GASKET	1			
007501	AIR MOTOR FLANGE	1			
007502	SPACER CYLINDER	1			
007506	FIXING SCREW	4			
007507	SEAL GASKET, TEFLON	1			
007513	CENTRAL PUMP HSG., S.S.	1			
007514	LOWER CYLINDER, S.S.	1			
007515	UPPER CYLINDER., S.S.	1			
007600*	SUCTION VALVE FOR PNEUMATIC	1			
007752**	UPPER SEALS	1			
009215	FIXING SCREW	1			
010116*	SUCTION VALVE GASKET	1			
012011***	BALL dia.11, S.S.	2			
012109	CONICAL PLUG 1/8"	4			
013129	COPPER GASKET 1/2"	1			
021760	SCREW	2			
022119	COPPER GASKET 3/8"	1			
023101	COVER COMPLETE WITH BUSH	1			
023102	GASKET	1			
023103	UPPER BUFFER	1			
023104	PILOT SHAFT	1			
023105	AIR CONTROL VALVE SUPPORT	1			
023108	WASHER	1			
023113	PISTON BODY	2			
023114	GASKET	2			
023120	SILENCER	1			
023121	SILENCER FIXING CAP	1			
023124	AIR CLUTCH FLANGE	1			

Spare parts suggested:

7608	SUCTION VALVE KIT (*)	
7803	UPPER AND LOWER PACKINGS SET (**)	
10328	DUMP VALVE KIT,S.S.	
23318	COMPRESSION VALVE KIT (***)	
